



Bronto Skylift F-RLX/RPX range

VERSATILE AERIAL PLATFORMS



Performance and features above all

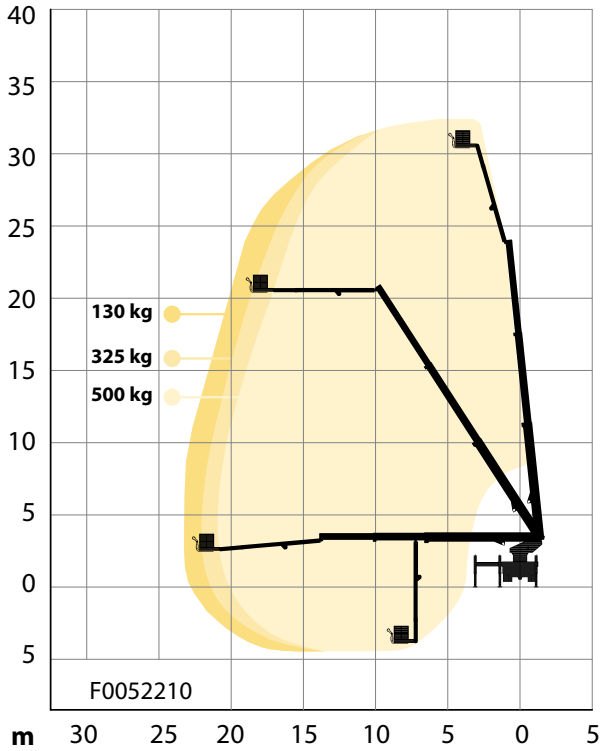
RLX and RPX ranges include all the features that have made Bronto aerial ladder platforms a trusted and well-known choice. The RLX units feature a spacious rescue cage, a stable ladder, greater up-and-over capacity and various options to give more versatility for rescue and fire fighting situations. Some of the units are available with a bit heavier configuration enabling extended reach (ER). RPX range includes all the features of the RLX range but without the ladder.

RLX/RPX range key features

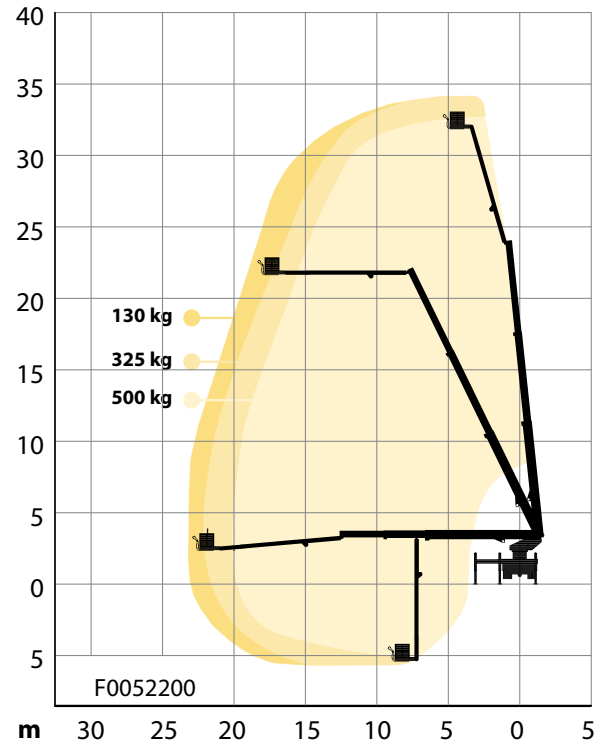
- Spacious rescue cage with high safe working load
- Good up-and-over capability and below-ground reach
- Big outreach and a larger action area with one set-up
- Compact design and a good height-to-weight ratio
- Economical and manoeuvrable, greater access to load-restricted roads and bridges
- Stable rescue ladder in the RLX range
- User friendly Bronto 5+ control system
- Modern service tools and a wide service network



F32RLX



F34RLX



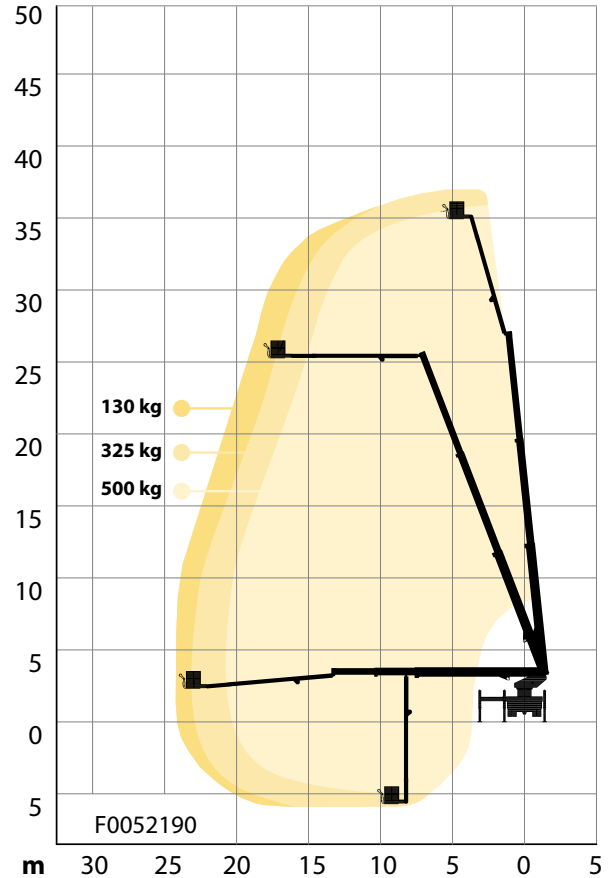
	32 m		3.4 m*
	23.1 m		9 m*
	500 kg		18 t*
	9 m		3,800 l/min

	34 m		3.4 m*
	23.2 m		9 m*
	500 kg		18 t*
	10.5 m		3,800 l/min

* depending on chassis
Diagrams presented with standard configuration. Variations apply.



F37RLX



37 m



3.6 m*



24.2 m



9.95 m*



500 kg



21 t*

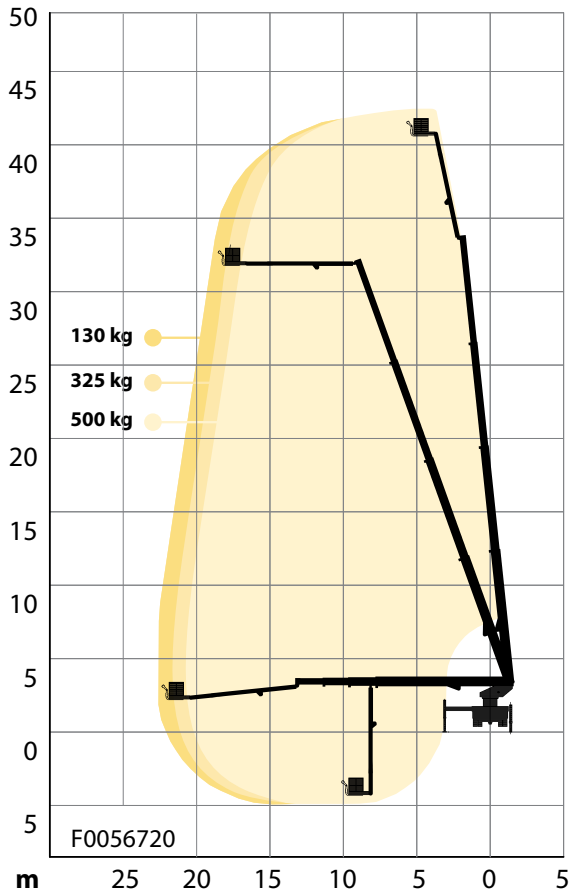


10.5 m

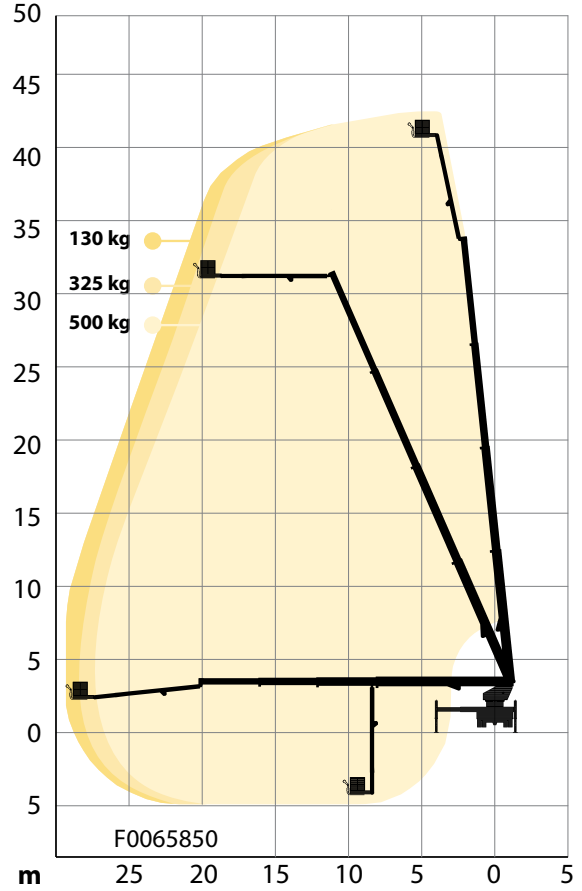


3,800 l/min

F42RLX



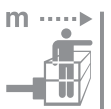
F42RLXER



42 m



3.6 m*



22.5 m



9.95 m*



500 kg



21 t*



9 m



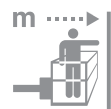
3,800 l/min



42 m



3.7 m*



29.3 m



10 m*



500 kg



26 t*



9 m

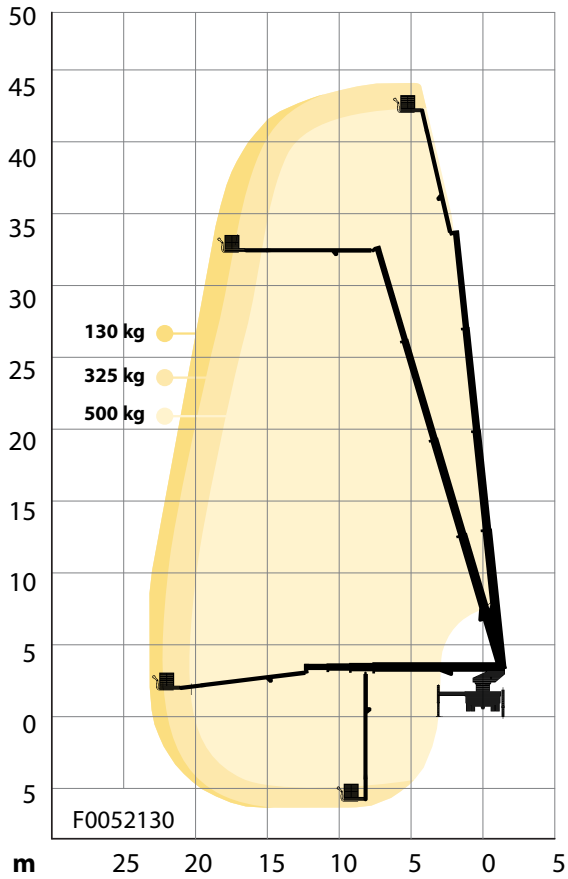


3,800 l/min

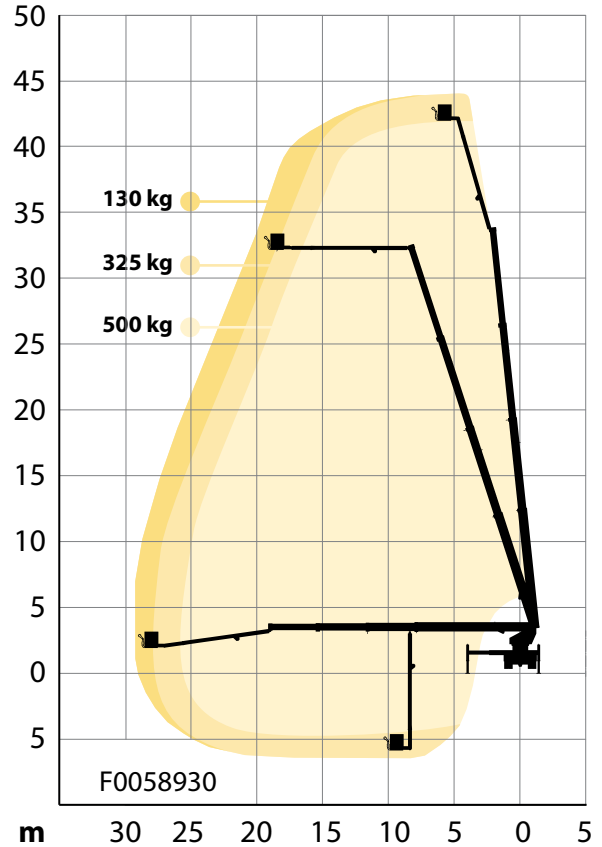
* depending on chassis

Diagrams presented with standard configuration. Variations apply.

F44RLX



F44RLXER



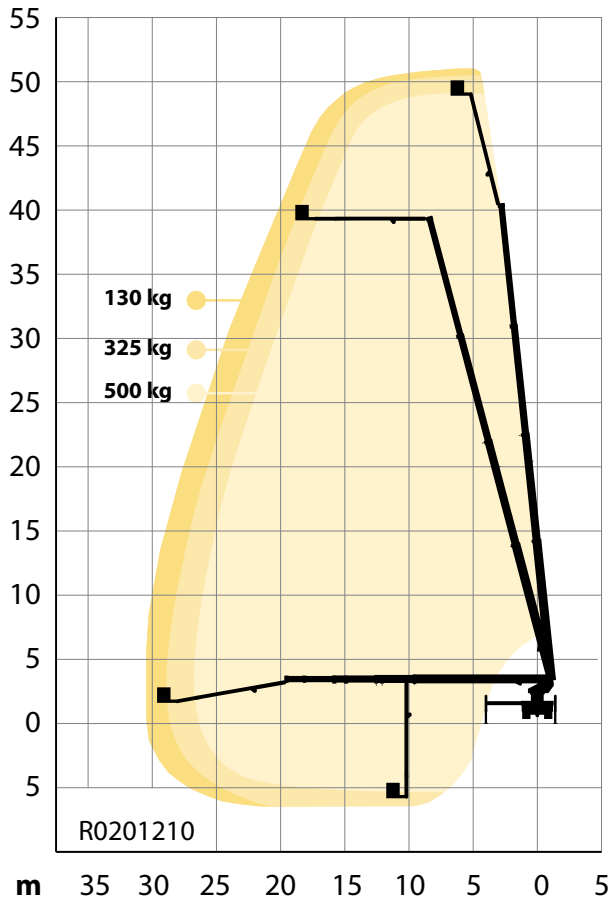
	44 m		3.6 m*
	23.1 m		9.95 m*
	500 kg		22 t*
	10.5 m		3,800 l/min









	44 m		3.7 m*
	29.2 m		10 m*
	500 kg		26 t*
	10.5 m		3,800 l/min

* depending on chassis

Diagrams presented with standard configuration. Variations apply.

F51RLX

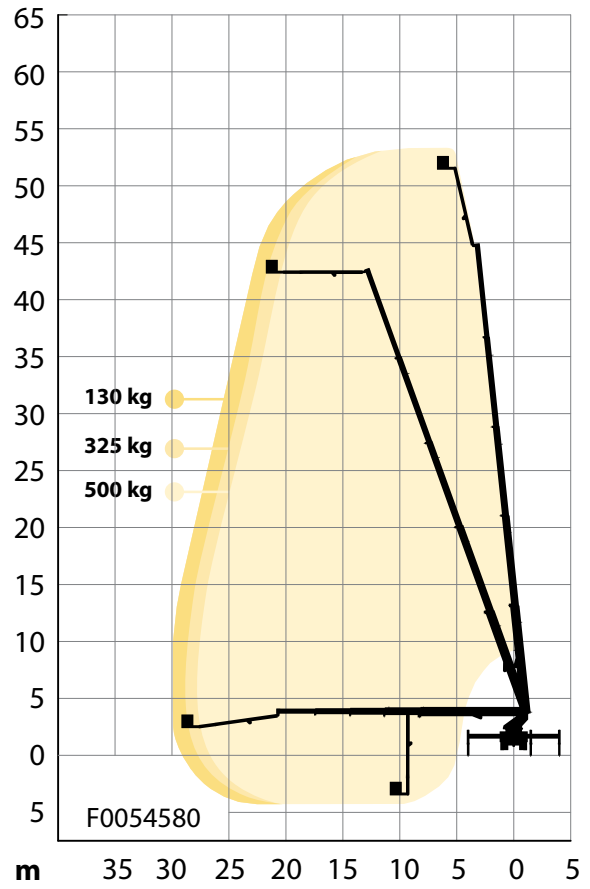


	51 m		3.8 m*
	30.4 m		11.9 m*
	500 kg		28 t*
	10.5 m		3,800 l/min





F53RLX



53 m



3.9 m*



29.8 m



10.8 m*



500 kg



32 t*

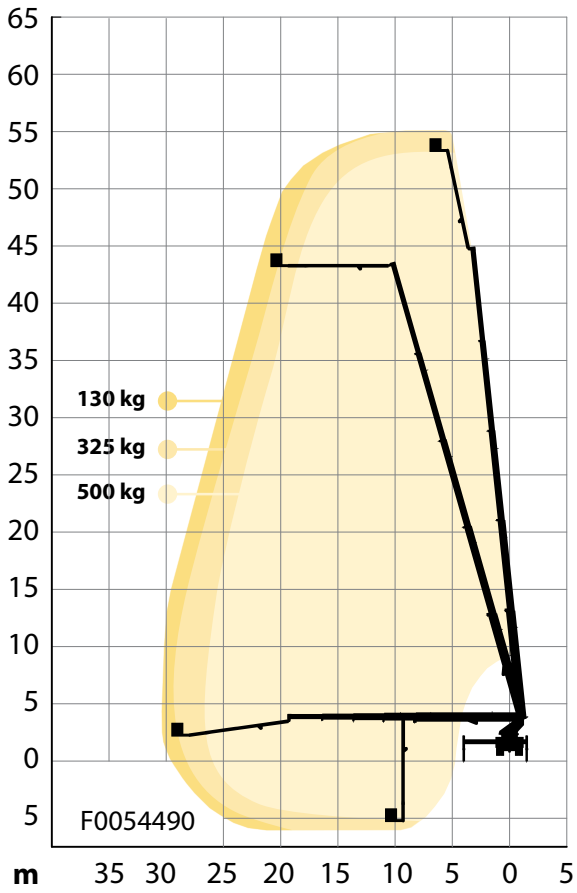


9 m

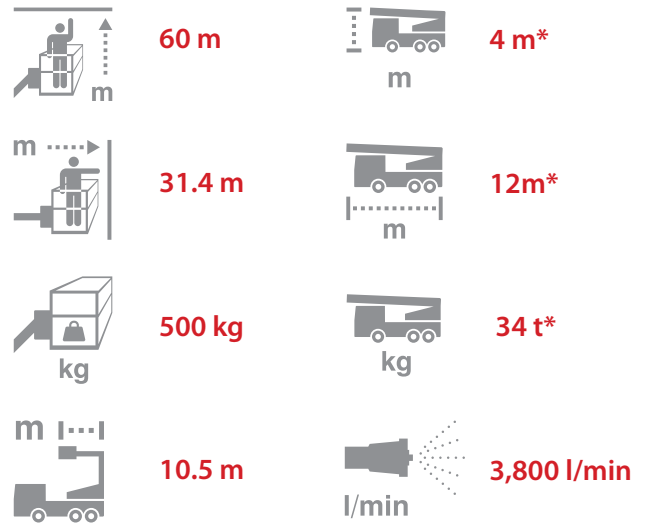
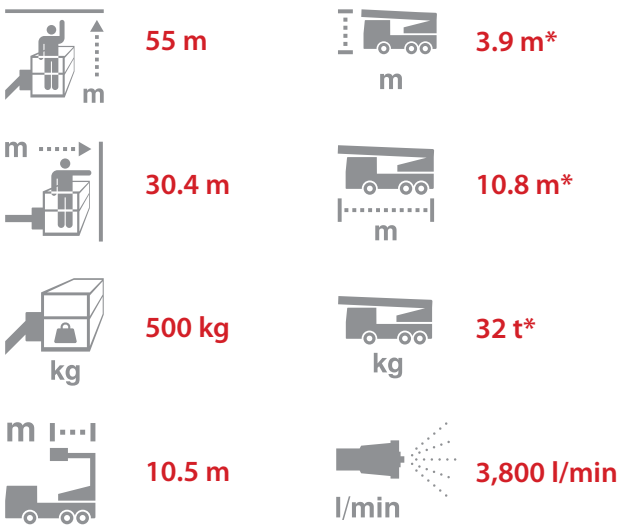
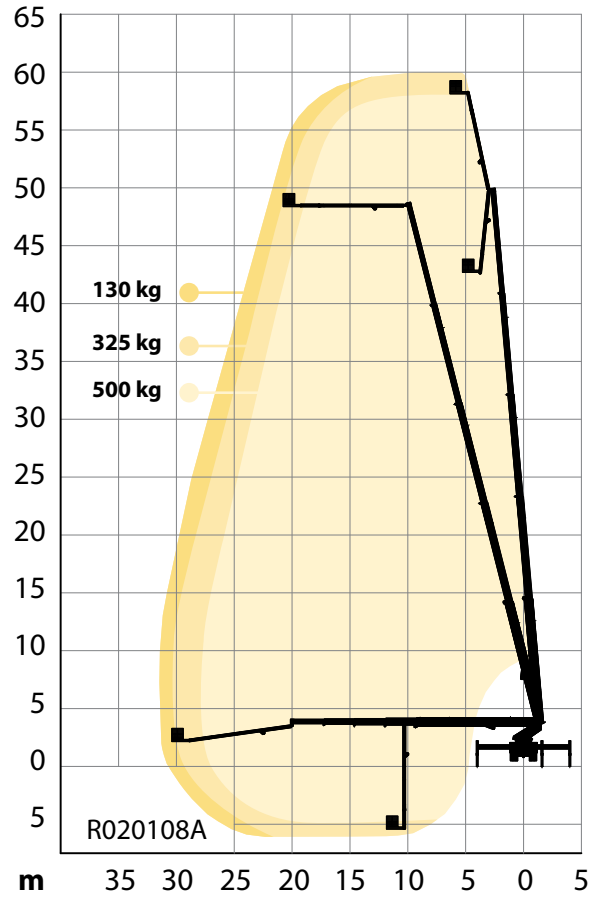


3,800 l/min

F55RLX



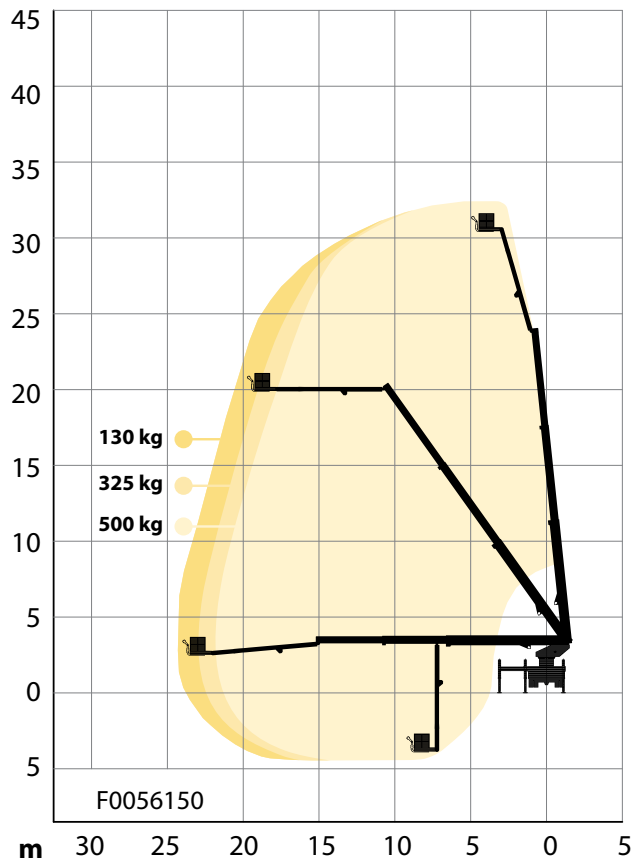
F60RLX



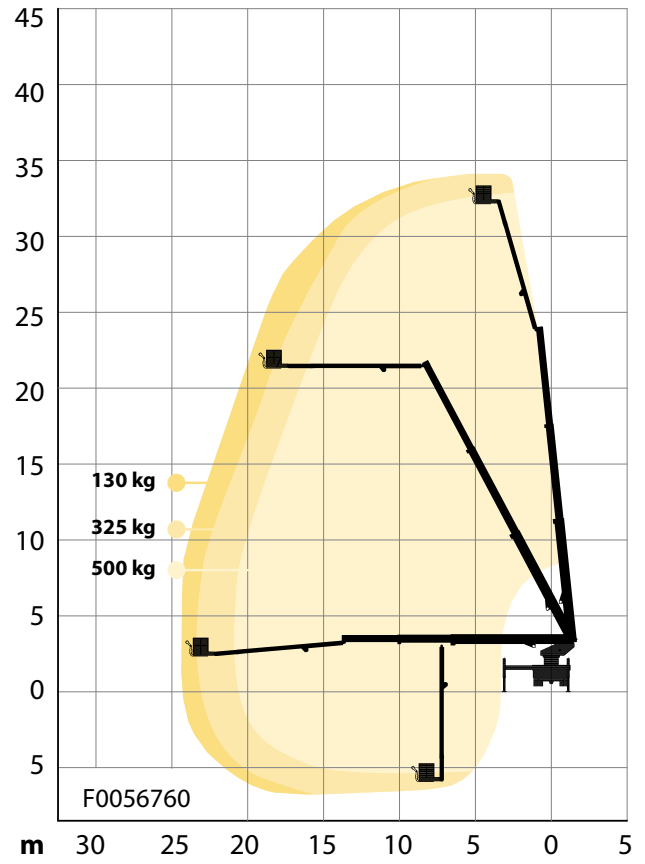
* depending on chassis

Diagrams presented with standard configuration. Variations apply.

F32RPX



F34RPX

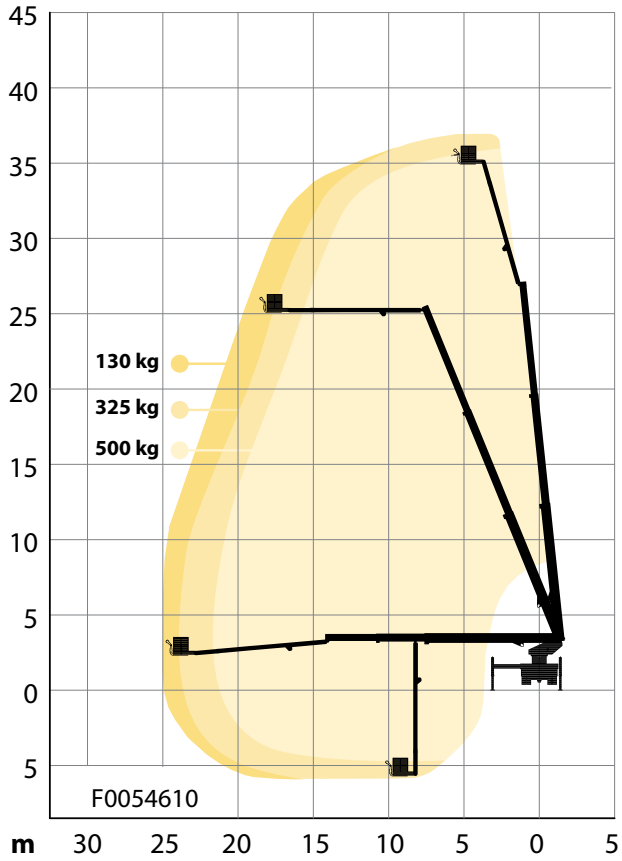










	32 m		3.4 m*
	24.3 m		9 m*
	500 kg		18 t*
	9 m		3,800 l/min

	34 m		3.4 m*
	24.3 m		9 m*
	500 kg		19 t*
	10.5 m		3,800 l/min

* depending on chassis
Diagrams presented with standard configuration. Variations apply.

F37RPX

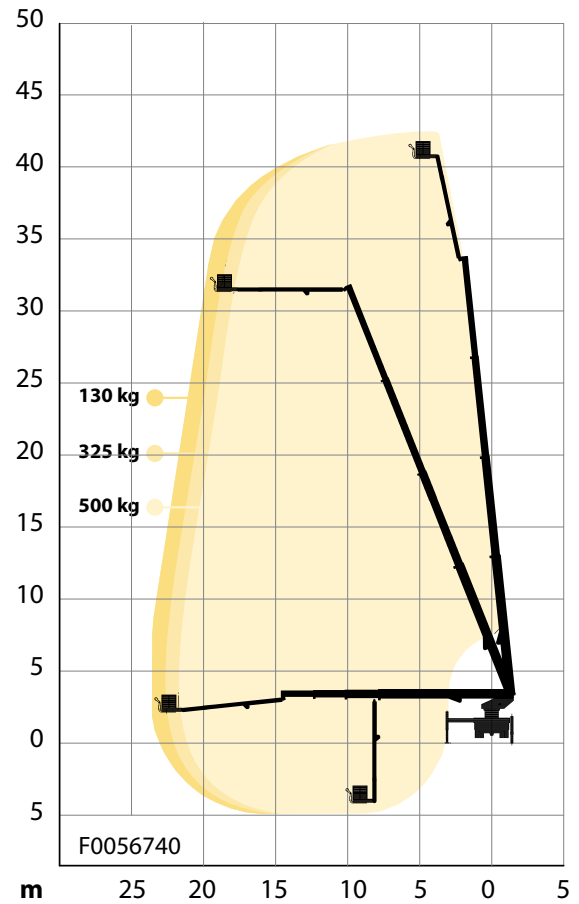


- 
37 m

3.6 m*
- 
25 m

9.95 m*
- 
500 kg

21 t*
- 
10.5 m

3,800 l/min



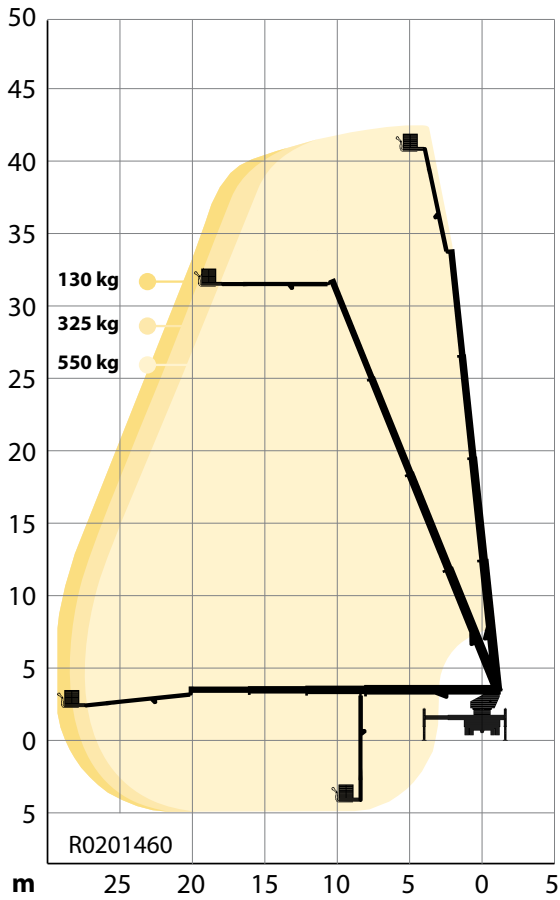


F42RPX

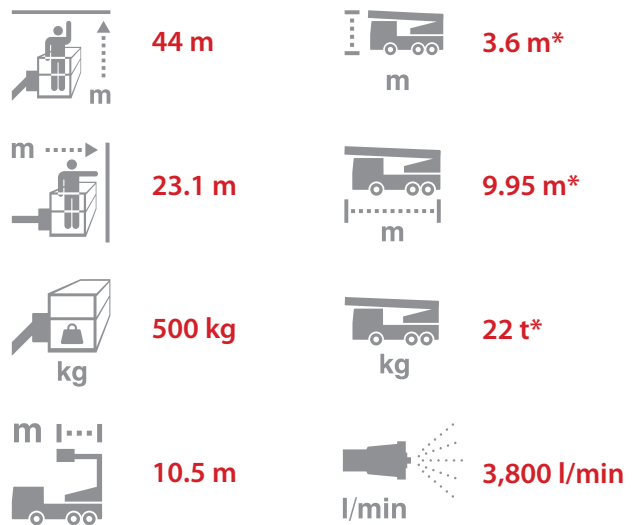
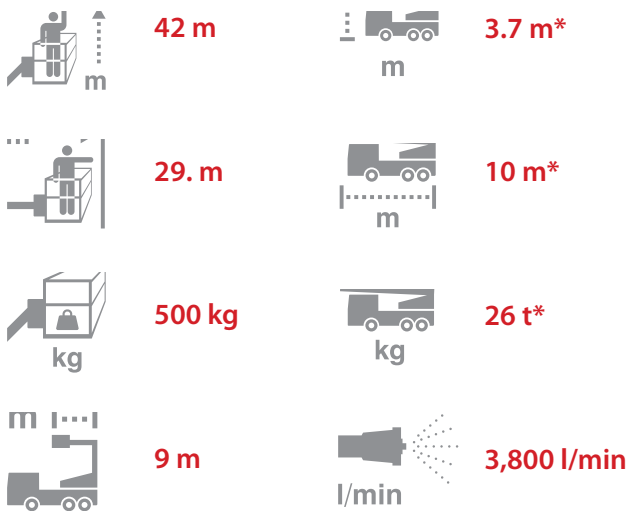
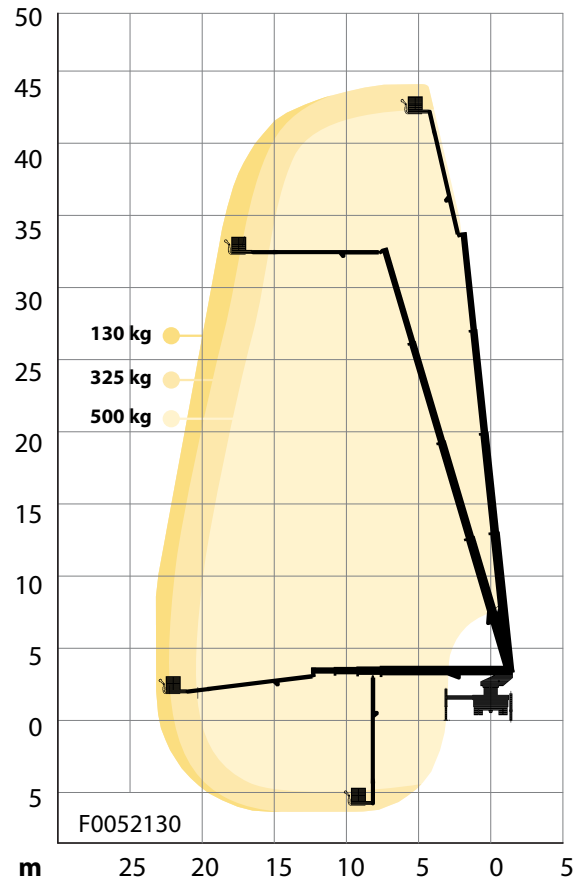


- | | | | |
|--|---------------|--|--------------------|
| | 42 m | | 3.6 m* |
| | 23.5 m | | 9.95 m* |
| | 500 kg | | 21 t* |
| | 9 m | | 3,800 l/min |

F42RPXER



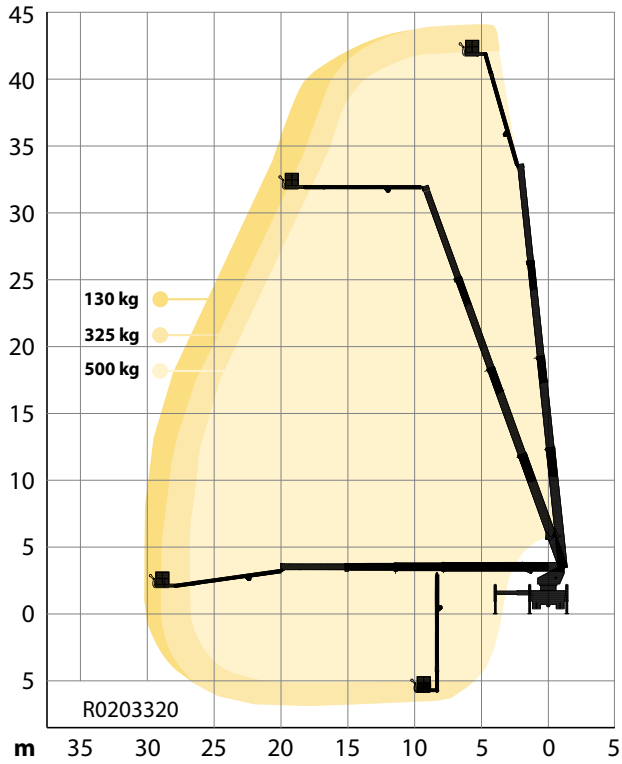
F44RPX



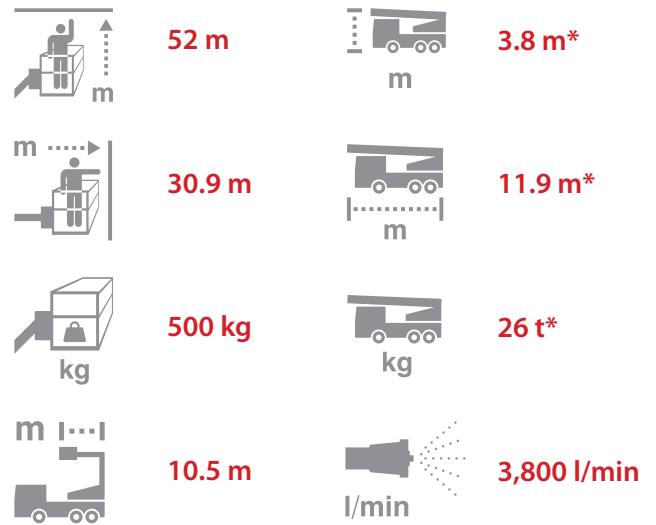
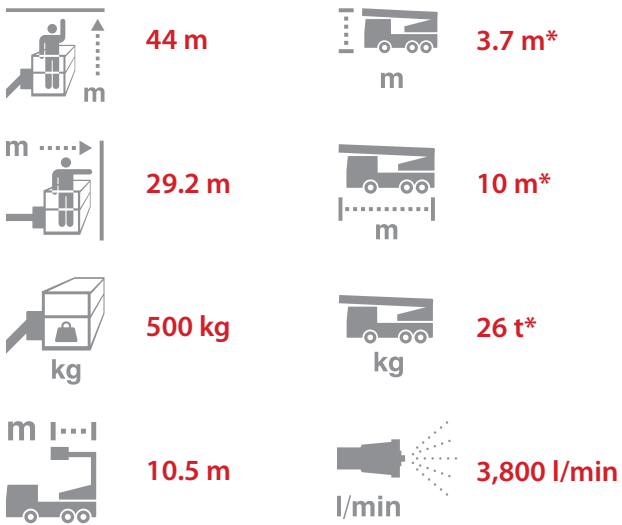
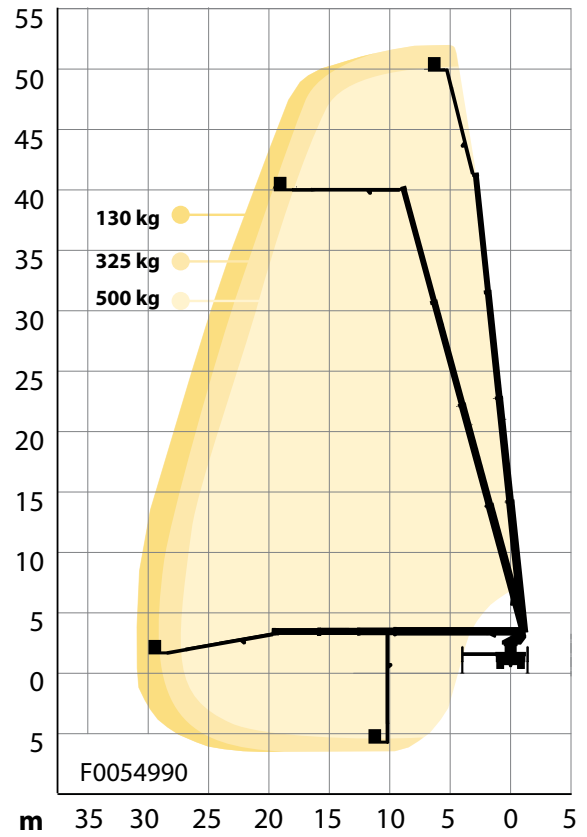
* depending on chassis

Diagrams presented with standard configuration. Variations apply.

F44RPXER



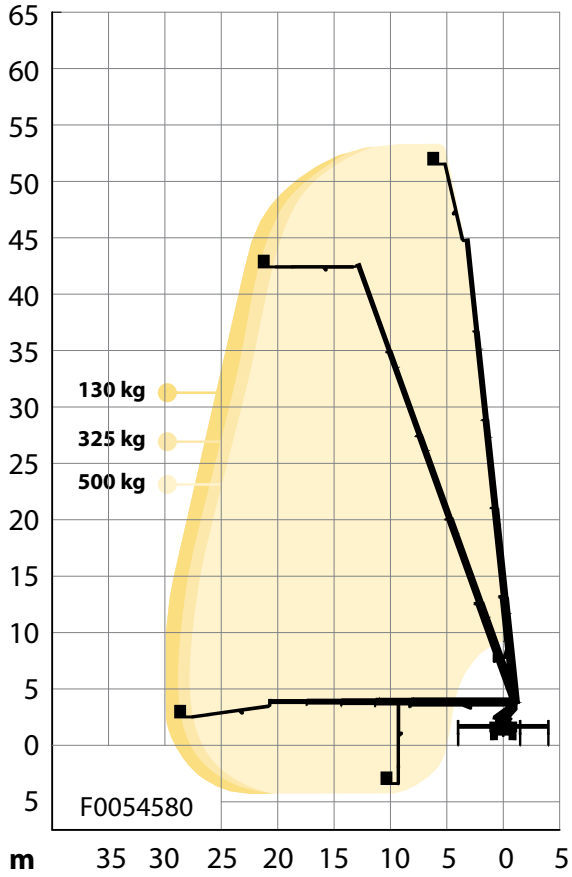
F52RPX











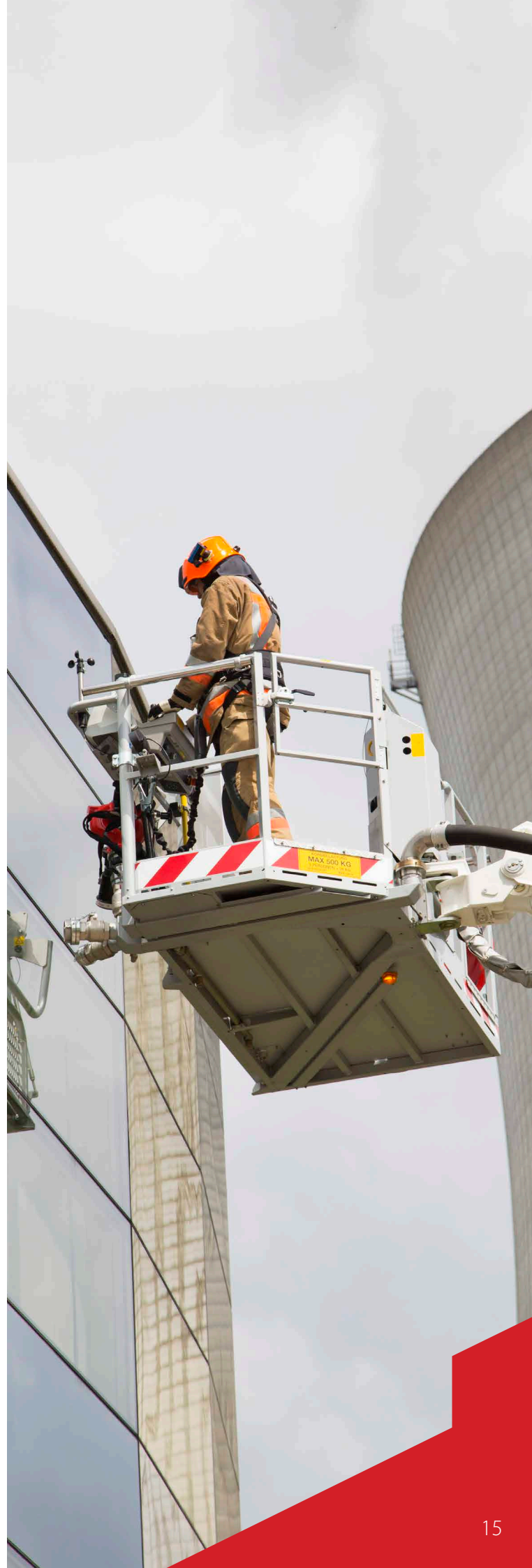
* depending on chassis

Diagrams presented with standard configuration. Variations apply.

F53RPX

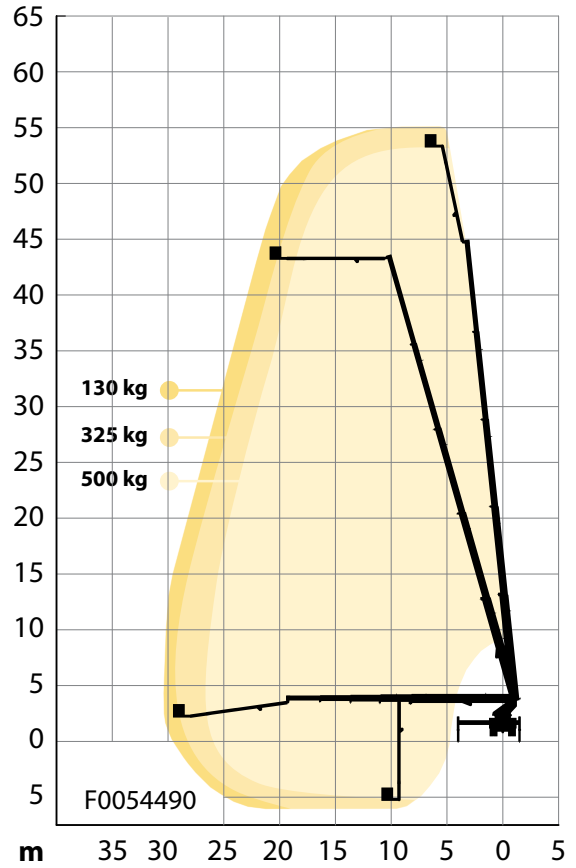









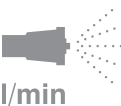
- 
53 m

3.9 m*
- 
29.8 m

10.8 m*
- 
500 kg

32 t*
- 
9 m

3,800 l/min



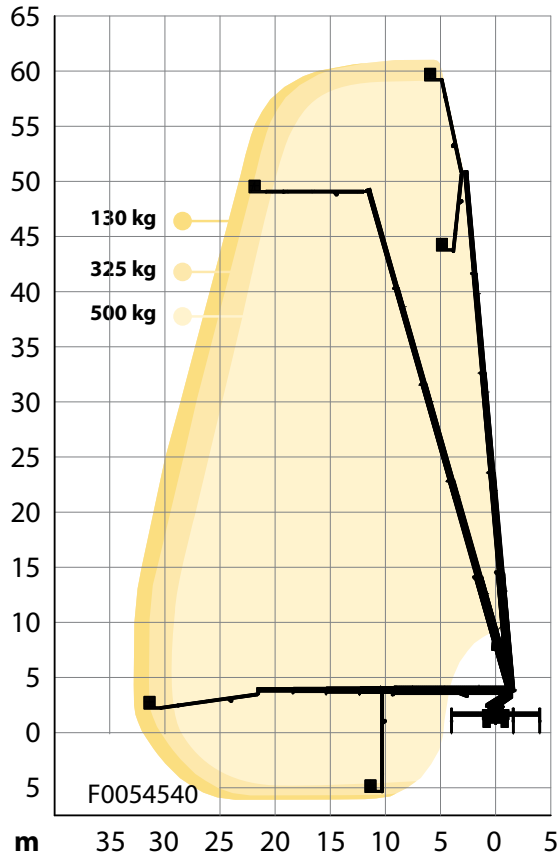


F55RPX

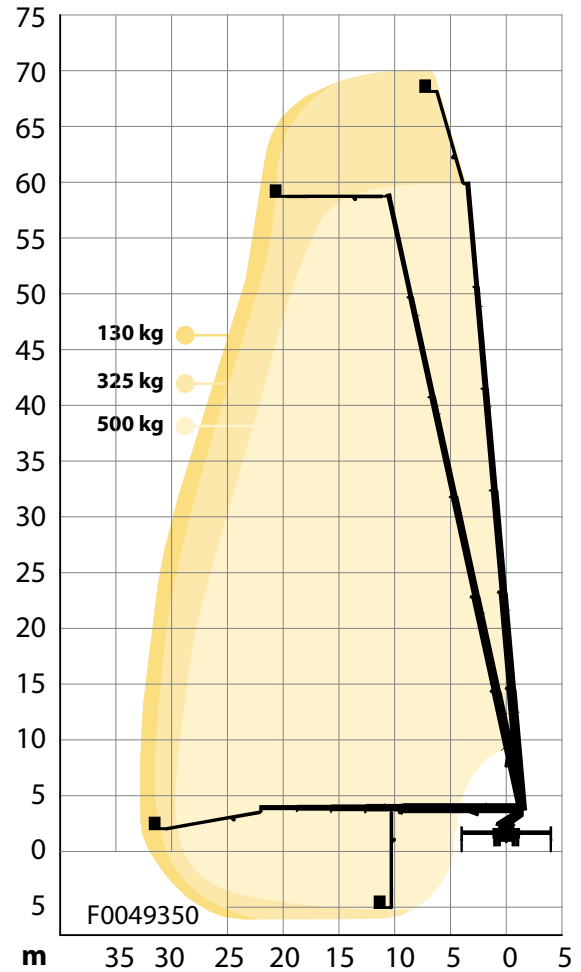


- | | | | |
|---|---------------|---|--------------------|
|  | 55 m |  | 3.9 m* |
|  | 30.4 m |  | 10.8 m* |
|  | 500 kg |  | 32 t* |
|  | 10.5 m |  | 3,800 l/min |

F61RPX



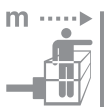
F70RPX



61 m



4 m*



32.8 m



12 m*



500 kg



33 t*



10.5 m



3,800 l/min



70 m



4 m*



32.8 m



12.5 m*



500 kg



36 t*



10.5 m



3,800 l/min

* depending on chassis

Diagrams presented with standard configuration. Variations apply.



Various options

- Breathing air, electricity and hydraulics in the cage
- Remote control for boom movements and water monitor
- Emergency back-up system
- Detachable winches
- Stretcher carrier
- High voltage detector
- Ultrasonic collision guard
- Various working lights and camera options
- Laser Rangefinder
- Bronto Loadman to measure ground bearing

(simplified selection)



Services for added safety and efficiency

For optimal performance and your safety, it pays off to take the best possible care of your Bronto platform.

The widest service network in the industry keeps you backed up wherever you are. With a Bronto Service agreement, you can be assured that your Bronto equipment is kept in the best possible shape for its entire lifetime. The content of the mutual agreement can be fully customised according to your needs. It can cover the annual inspections and service visits, but it can also include more detailed inspections, other maintenance activities and spare parts.

When the emergency arises, confidence in operator skills is crucial. For your teams safety our IPAF-certified field engineers provide operator and maintenance training for all new units. Content, location and the depth of the training can be tailored and additional training is always available where ever you need it.

Bronto One

Do you want to use your data to make knowledge-based business decisions? Bronto One, a new service, gives you a full visual overview of your resources, performance and abilities. You can always access the information you need, right when you need it.

All Bronto aerials equipped with a modem are fully connected to Bronto One. However, fleets often include other types of equipment, and having only one manufacturer's unit in your fleet management system is like trying to complete a puzzle without all the pieces.

Bronto One welcomes every manufacturer's units and equipment, so it really does provide a full picture of your fleet. As Bronto One has an open interface, it can also be easily integrated with other systems.

Bronto+ control system takes care of you

Safety is about creating a safer working environment. An advanced Bronto+ control system increases the safety on your worksites by letting you focus on the job at hand.

- Easy and ergonomic
- Precise, stable movements and extremely reliable outreach
- Automatic selection of the maximum allowed outreach in every direction based on the set up and cage load
- Bronto+ displays with touch screens and tailorable menus
- Integrated help texts, quick manuals and detailed failure codes help you in all situations



Bronto Skylift is a trusted global supplier of truck-mounted hydraulic platforms. We design, manufacture, sell and service appliances for rescue and firefighting, as well as for industrial access.

Our product range includes approximately 50 models with a range of 17 to 112 metres of working height. The advanced modularity also allows for numerous client-specific modifications. During the past 50 years, we have delivered over 7,000 platform units to fire brigades and industrial customers throughout all the continents in more than 120 countries.

Our headquarters and production plants are situated in Finland. We also have subsidiaries in Germany, Sweden, Switzerland and the US. The company is part of the Japan-based Morita Holdings Corporation.

sales@brontoskylift.com

Technical data and illustrations subject to change without notice.

www.brontoskylift.com